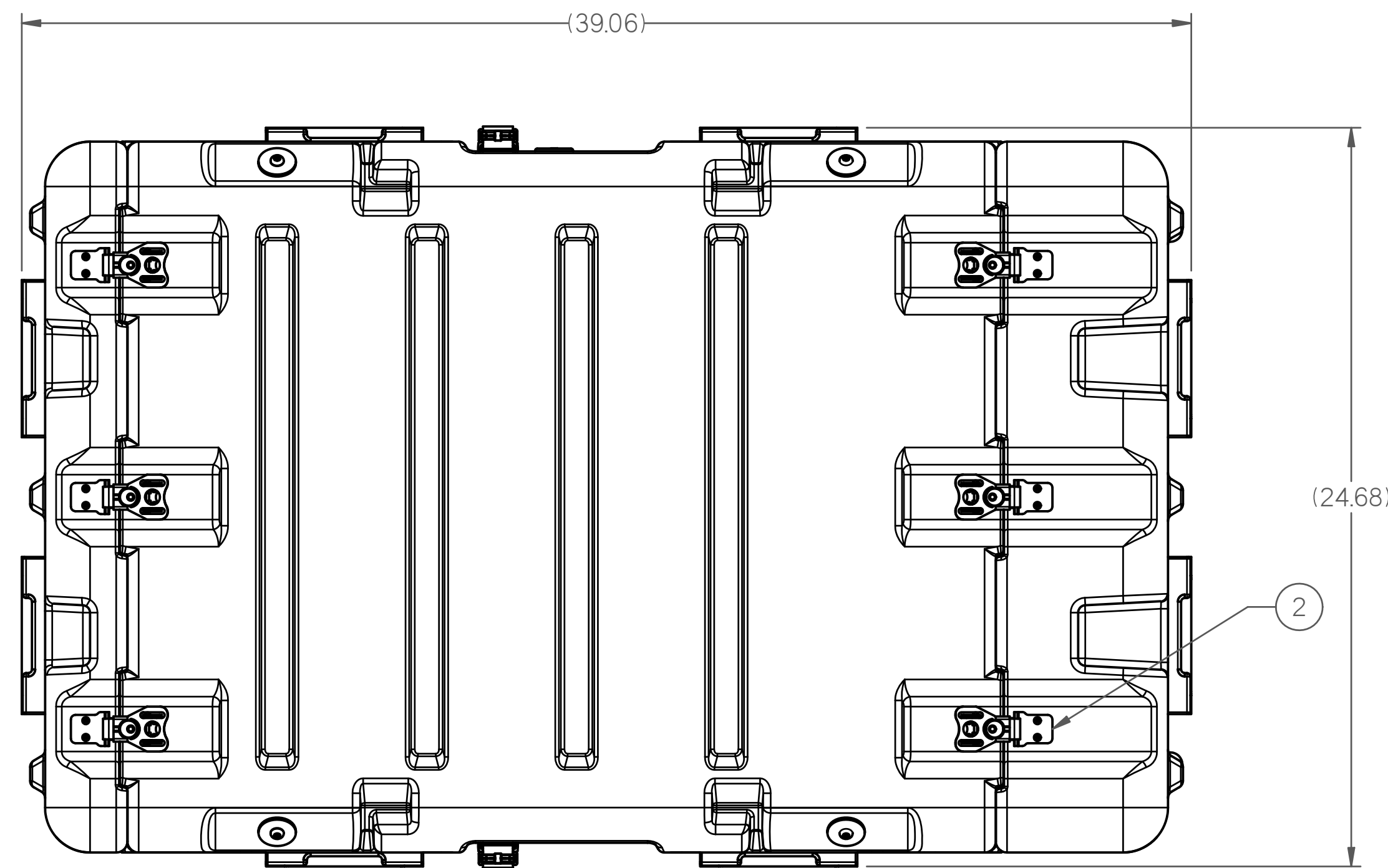


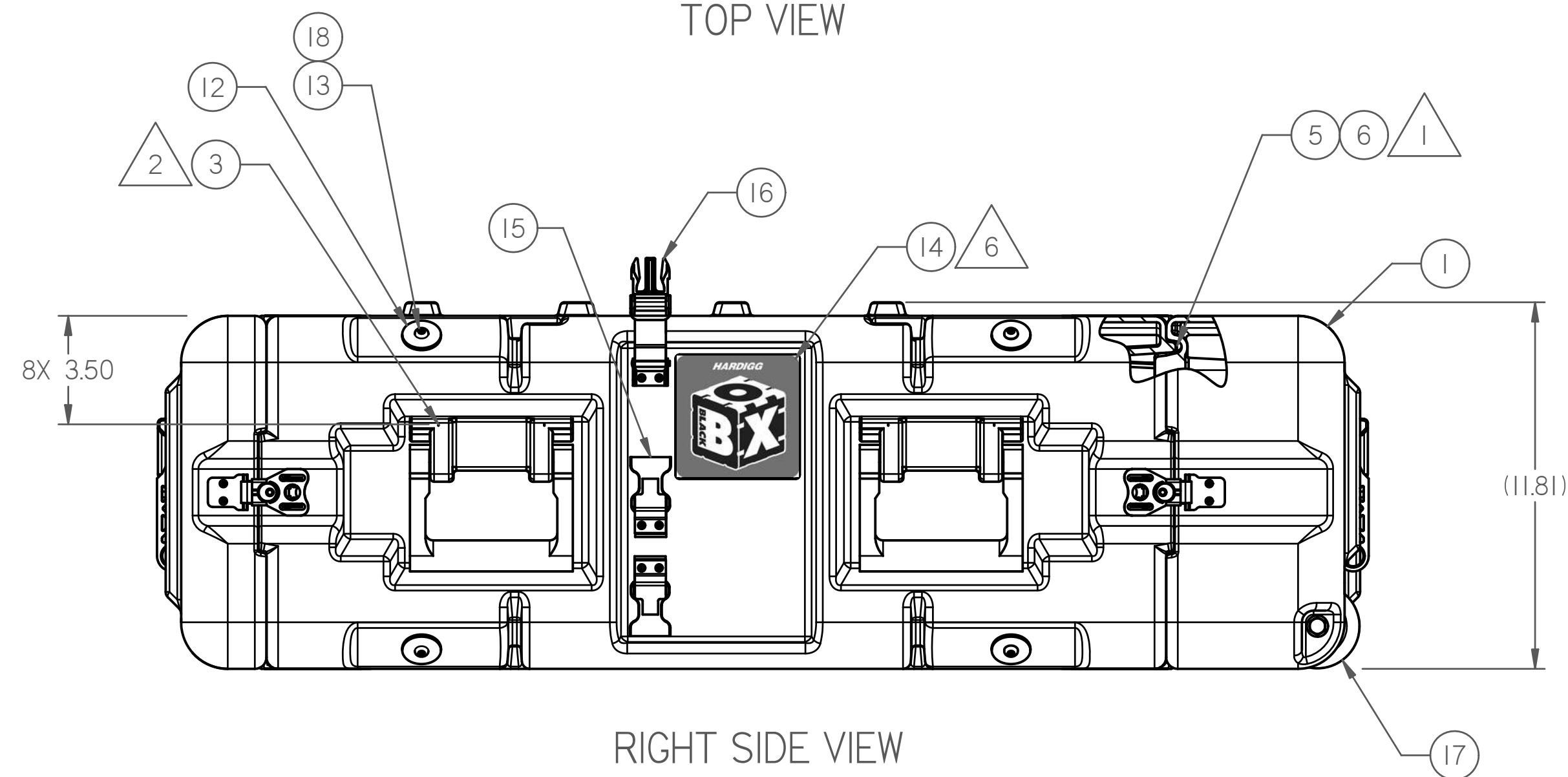
NOTES:

- 1 GASKET TO BE CLOSED LOOP
- 2 CENTER HANDLES IN HANDLEWELLS APPROXIMATELY AS SHOWN.
- 3 MOUNTING HOLE TO BE Ø1.06.
- 4 SHIM SHOCK MOUNTS FROM FRAME TO MOUNT WITH .38" THK SHIM.
- 5 THIS PART AND ALL OF ITS COMPONENTS MUST COMPLY WITH THE EUROPEAN PARLIAMENT DIRECTIVE 2002/95/EC ON THE RESTRICTED USE OF CERTAIN HAZARDOUS SUBSTANCES (ROHS). THE PARTS (INCLUDING PLATING), MUST NOT CONTAIN ANY OF THE FOLLOWING SUBSTANCES: LEAD, MERCURY, CADMIUM, HEXAVALENT CHROMIUM, POLY BROMINATED BIPHENYLS (PBB) OR POLYBROMINATED DIPHENYL ESTERS (PBDE).
- 6 CLEAN LABEL AREA WITH ISOPROPYL ALCOHOL & FLAME TREAT.

| ITEM | DESCRIPTION                                  | DWG NO. / PART NO.   | QTY. | REVISION HISTORY |     |        |   |                          |                         |
|------|--|----------------------|------|------------------|-----|--------|---|--------------------------|-------------------------|
|      |  |                      |      | ZONE             | REV | E.C.O. | DESCRIPTION   | BY/DATE                  | APPROVED/DATE           |
| 1    | CONTAINER ASSY, BLK-463                      | MFG-SR2109-2295W-463 | 1    |                  |     |        | A1- ITEM 1 COLOR WAS BLK-032.<br>A2- ITEM 9 PIN WAS P67-17.                                       | C. HOPKINS<br>08FEB05    | DAVE SPRAGUE<br>08FEB06 |
| 2    | KIT, CATCH & STRIKE, LGE WING, W/SPRING, SSB | MFG-00005-03         | 16   |                  | A   | 039005 | A3- ITEM 11 WAS 1/4-20 X 3/8.<br>A4- ITEM 13 WAS 1/4-20 ACORN NUT.<br>A5- ADDED ITEM 18 & NOTE 5. |                          |                         |
| 3    | KIT, HANDLE, INJ MOLDED, LARGE (INT MT)      | MFG-00031            | 8    |                  | B   | 039199 | B1- ITEM 11 QTY WAS 8.<br>B2- DELETED ITEM 13.<br>B3- ADDED NOTE 6.                               | CHRIS HOPKINS<br>08MAR20 | SPRAGUE<br>08MAR21      |
| 4    | KIT, (I) PRV & LABEL                         | MFG-00053-01         | 1    |                  | C   | 039264 | ADDED ITEM 13<br>CHANGED QTY ITEM 11 WAS 16<br>CHANGED HANDLE HIGHT WAS 3.75                      | D. SPRAGUE<br>08APR02    |                         |
| 5    | GASKET, SILICONE                             | P021-0473            | 123  |                  |     |        |   |                          |                         |
| 6    | RTV, CLR, ADHESIVE SEALANT                   | RTV, GE 108          | A/R  |                  |     |        |   |                          |                         |
| 7    | KIT, LID HANGER, SWIVEL, RIGHT HAND          | MFG-00136-02         | 2    |                  |     |        |   |                          |                         |
| 8    | KIT, LID HANGER, SWIVEL, LEFT HAND           | MFG-00136-01         | 2    |                  |     |        |   |                          |                         |
| 9    | SHOCK MOUNT                                  | P67-73               | 8    |                  |     |        |   |                          |                         |
| 10   | FRAME ASSY, 24", 3U                          | PI24-0010-24-03      | 1    |                  |     |        |   |                          |                         |
| 11   | SCR, BTNHD,SOC, SSB                          | 1/4-20 X .62"        | 8    |                  |     |        |   |                          |                         |
| 12   | WSHR,FABCO,SSB                               | .264X1.25            | 8    |                  |     |        |   |                          |                         |
| 13   | SCR, BTNHD,SOC, SSB                          | 1/4-20 X .50"        | 8    |                  |     |        |   |                          |                         |
| 14   | LABEL, MIDSECTION, BLACK BOX                 | PI24-0014            | 2    |                  |     |        |   |                          |                         |
| 15   | KIT, RECEIVER, COUPLING CATCH                | MFG-00140            | 4    |                  |     |        |   |                          |                         |
| 16   | KIT, COUPLING CATCH                          | MFG-00141            | 2    |                  |     |        |   |                          |                         |
| 17   | SR LID WHEEL ASSEMBLY                        | MFG-00143            | 2    |                  |     |        |   |                          |                         |
| 18   | ADHESIVE, LOCTITE                            | 242                  | A/R  |                  |     |        |   |                          |                         |



TOP VIEW



RIGHT SIDE VIEW

CUST:  
UNIT:  
CONTRACT NO.

HARDIGG IND  
BLACK BOX - 3U

COMPUTER CONTROLLED DOCUMENT  
MANUAL CHANGES NOT ALLOWED

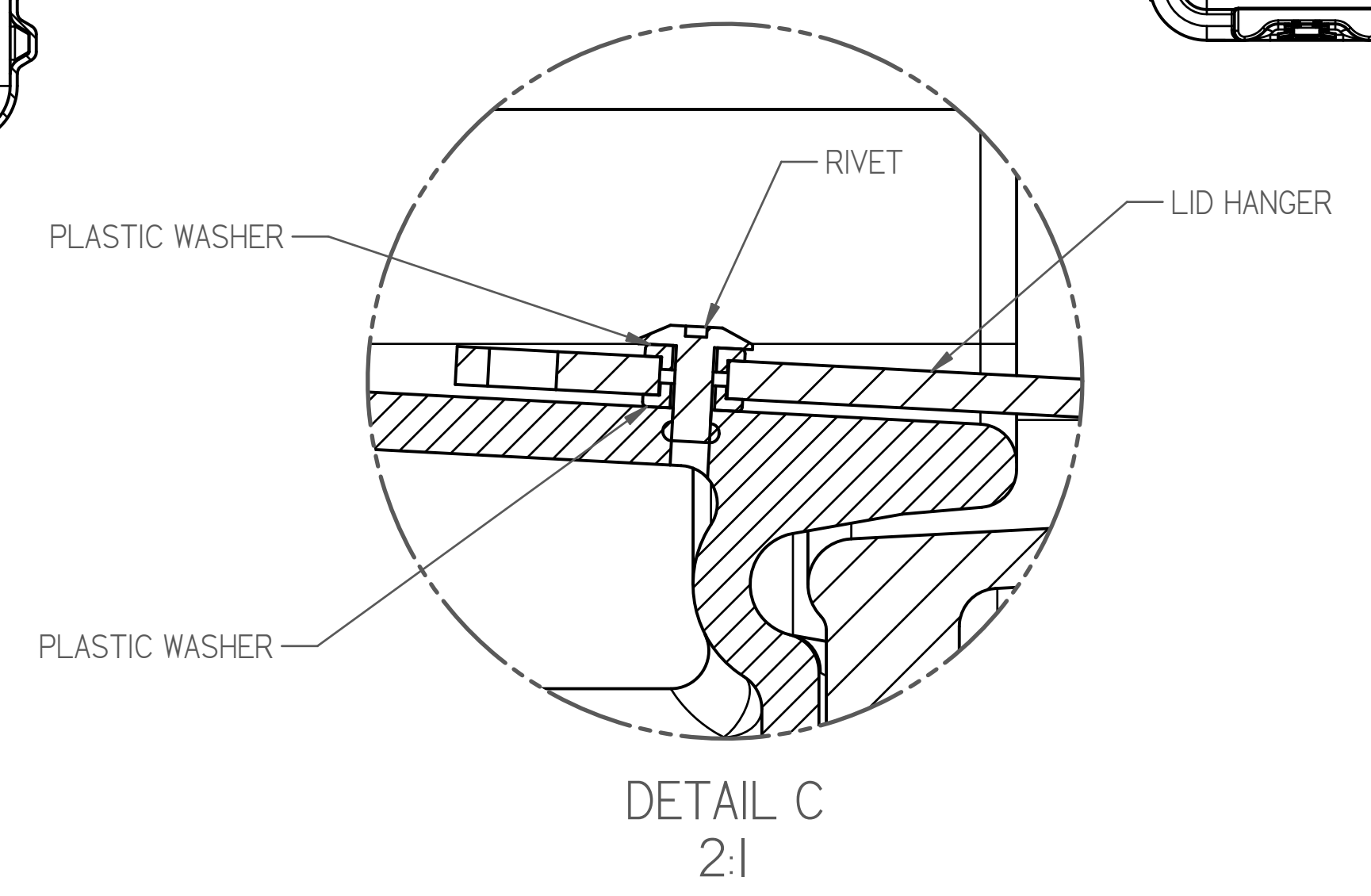
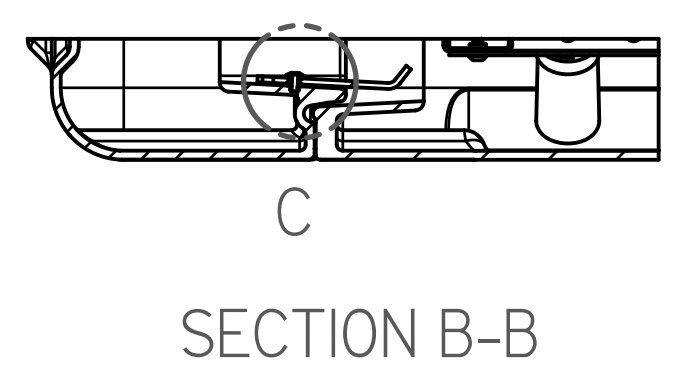
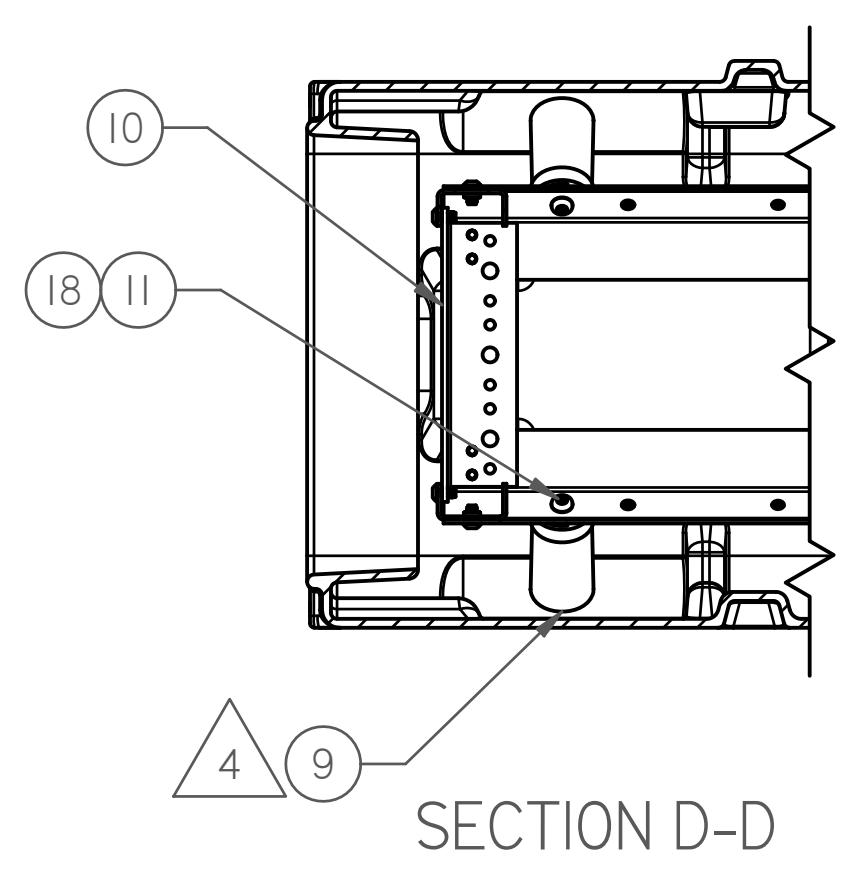
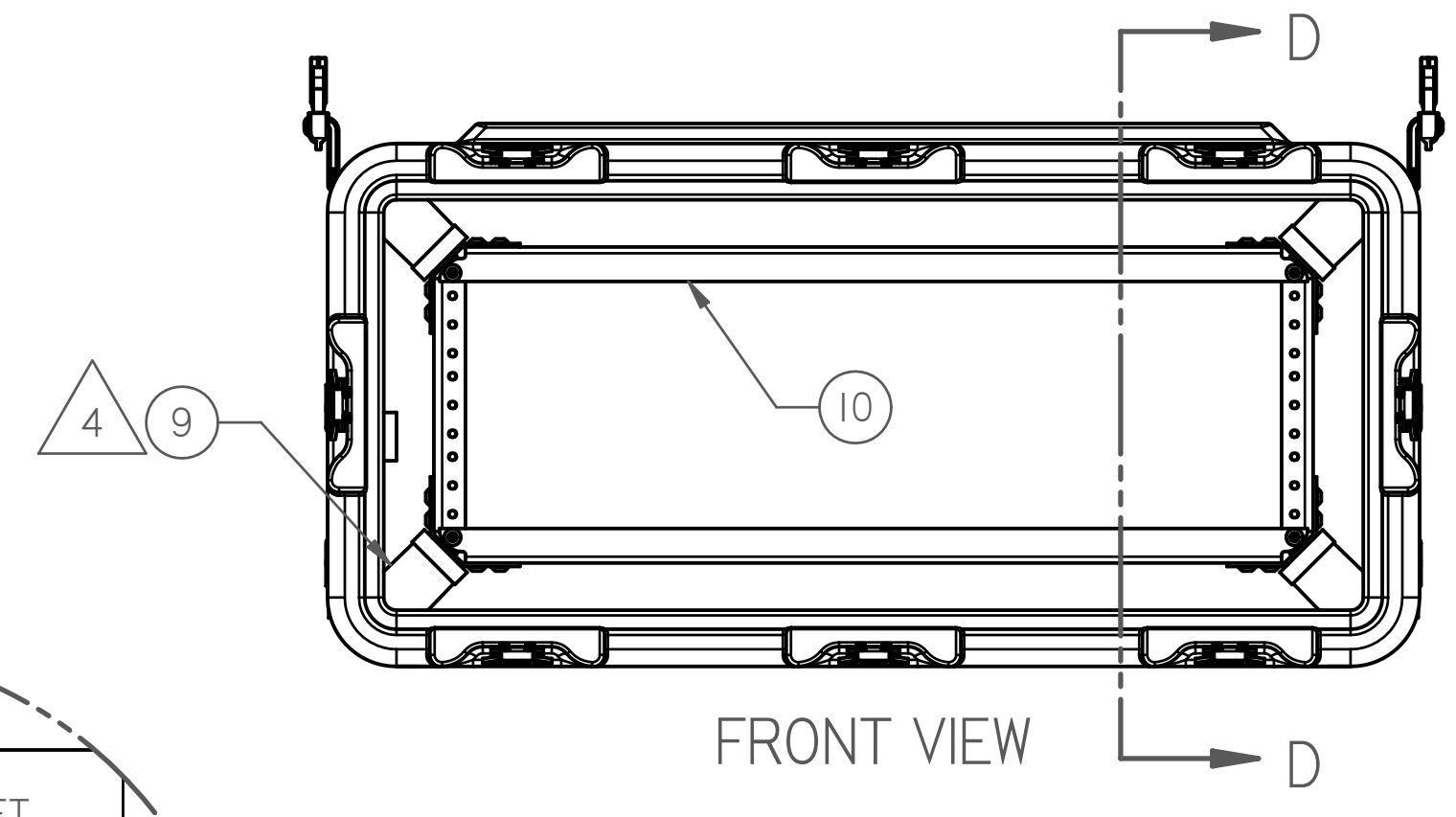
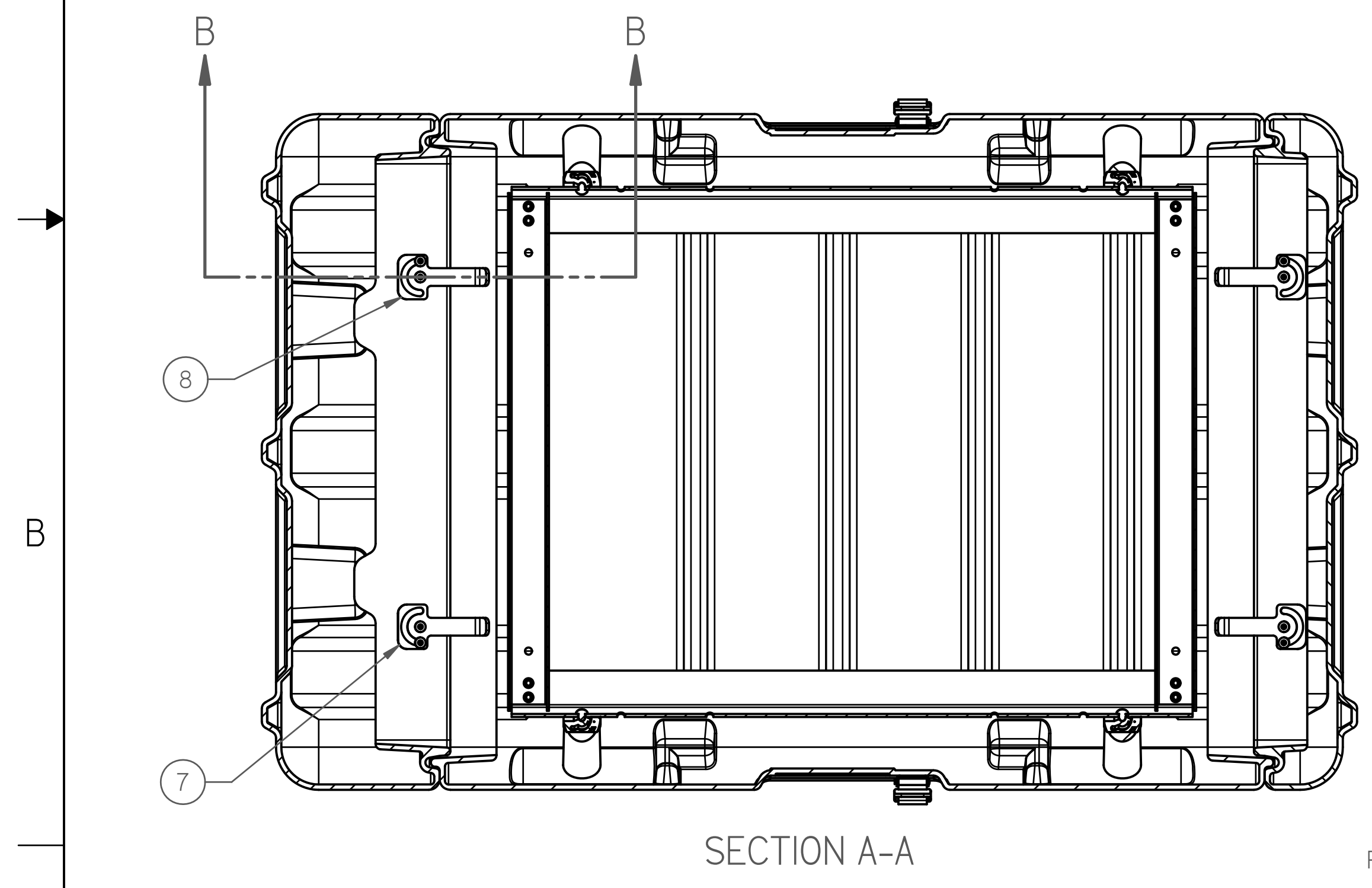
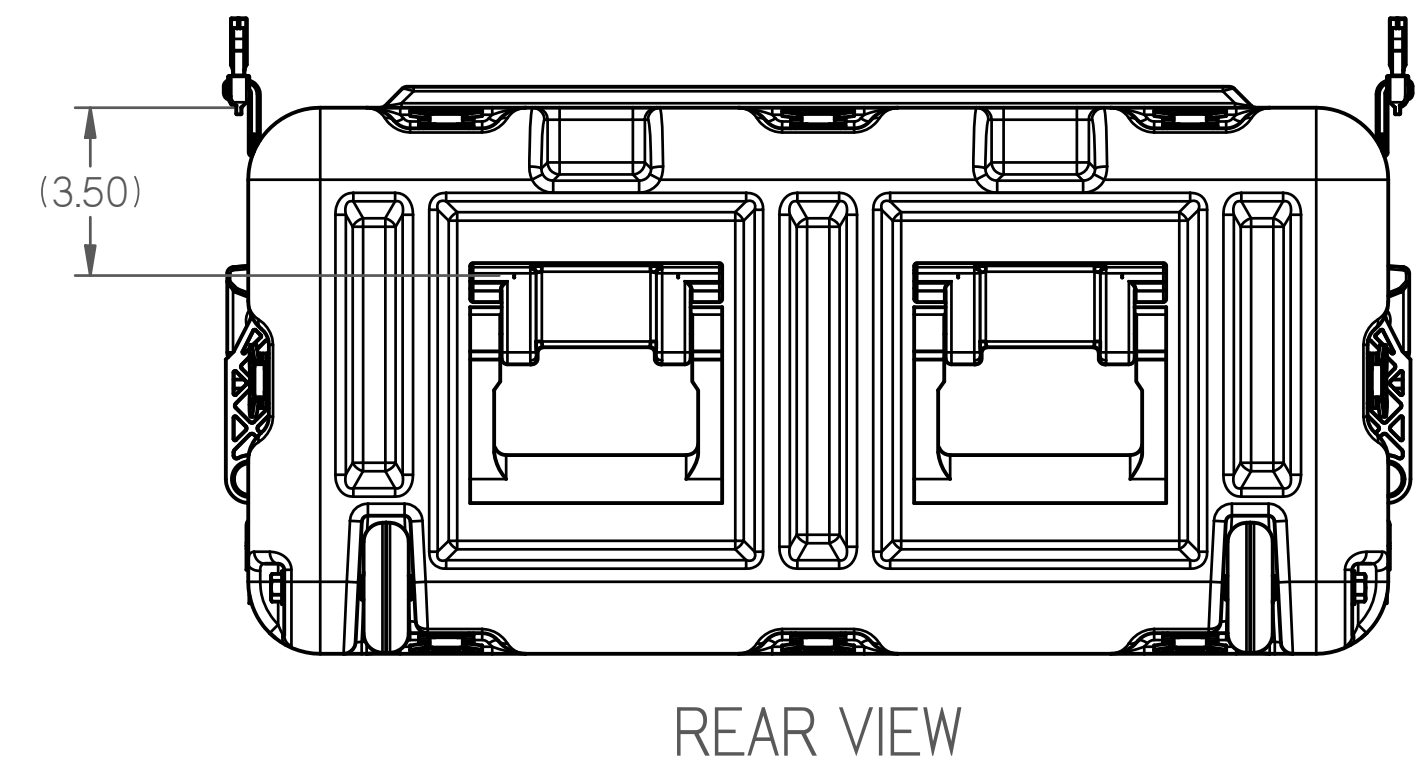
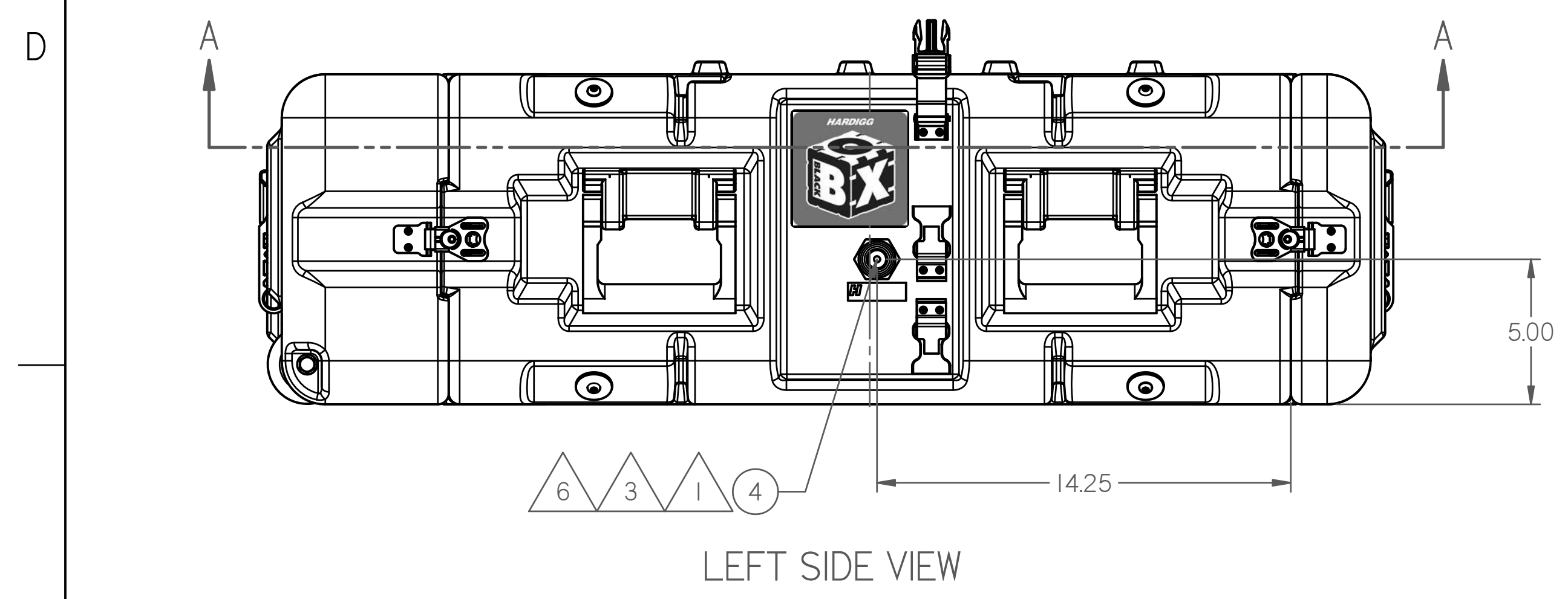
|                           |                            |                 |              |
|---------------------------|----------------------------|-----------------|--------------|
| NEXT ASSY:                | FINAL                      | SCALE           | 1/4          |
| TOLERANCE                 | UNLESS OTHERWISE SPECIFIED | ± .XX           | ± .XXX       |
| DR.                       | D. SPRAGUE                 | DATE            | 07-09-24     |
| ENGR.                     | D. SPRAGUE                 | DATE            | 07-09-24     |
| CHKD.                     | C. HOPKINS                 | DATE            | 07-10-22     |
| APVD.                     | C. HOPKINS                 | DATE            | 07-10-22     |
| TITLE                     |                            |                 |              |
| CNTNR ASSY, BLACK BOX, 3U |                            |                 |              |
| SIZE                      | CAGE CODE                  | DWG NO.         | REV          |
| D                         | 11214                      | PI24-0100-03-02 | C            |
| PROJ. NO.                 | PI24                       |                 | SHEET 1 OF 2 |

This drawing and all copies and the design and data shown are the property of HARDIGG INDUSTRIES, INC. So. Deerfield, MA USA, and include proprietary information. The borrower by receipt or retention of the drawing agrees that, except as expressly authorized in writing by HARDIGG INDUSTRIES, INC. it will (1) not use the drawing or any copy of the design or data shown (2) not reproduce, copy, excerpt, exhibit or distribute the drawing or any copy for use by others and (3) upon demand return the drawing, all copies and all material copies therefrom.

DWG NO. PI24-0100-03-02  
Sht. of 2  
REV C

A

8 7 6 5 4 3 2 1



A

B

C

D

A

B

C

D

8 7 6 5 4 3 2 1

COMPUTER CONTROLLED DOCUMENT  
MANUAL CHANGES NOT ALLOWED

|              |                    |                           |          |
|--------------|--------------------|---------------------------|----------|
| SIZE<br>D    | CAGE CODE<br>11214 | DWG NO<br>PI24-0100-03-02 | REV<br>C |
| SCALE<br>1/4 | SHEET 2 OF 2       |                           |          |

DWG NO PI24-0100-03-02  
SHEET 2 OF 2  
REV C