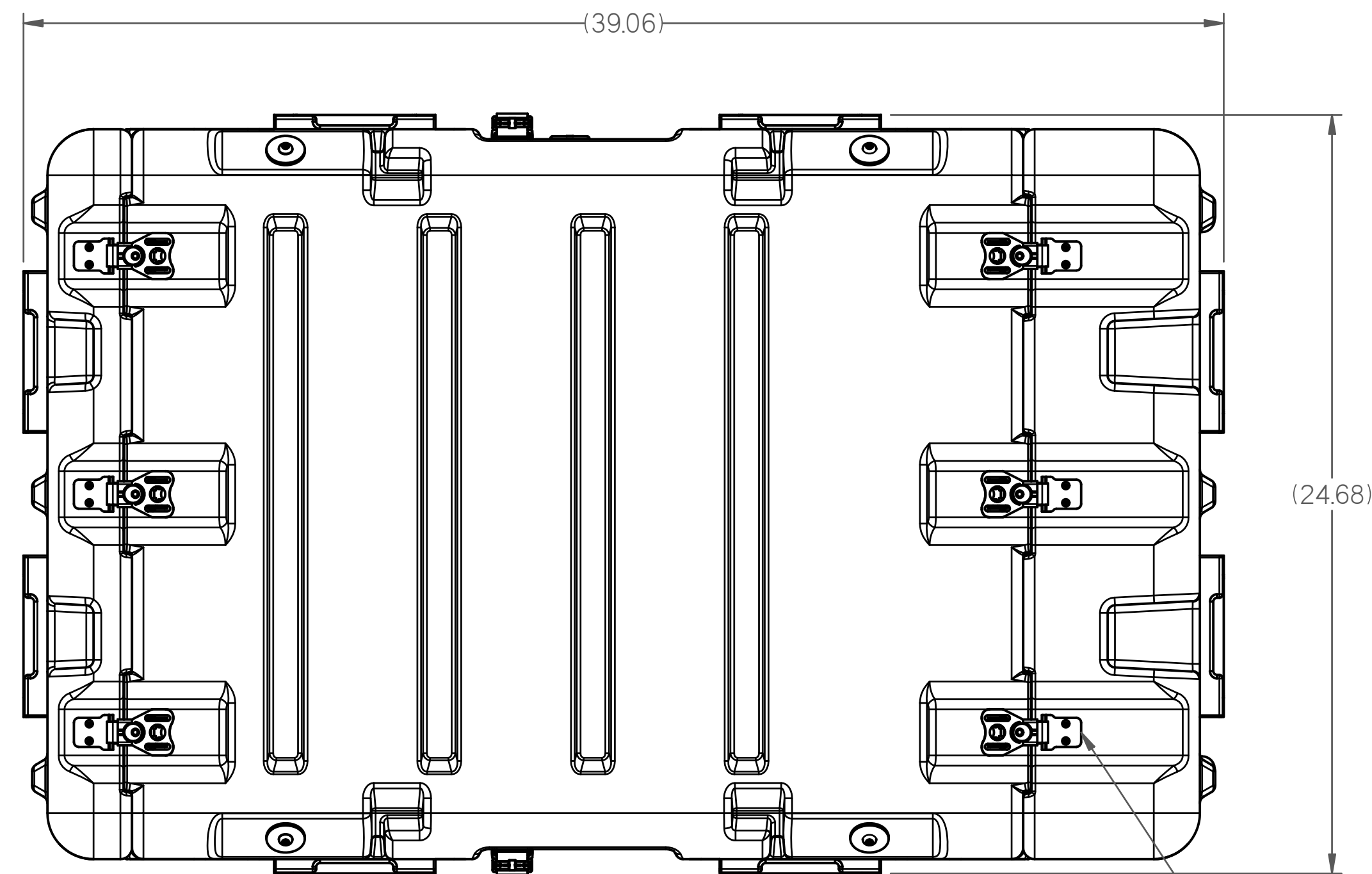
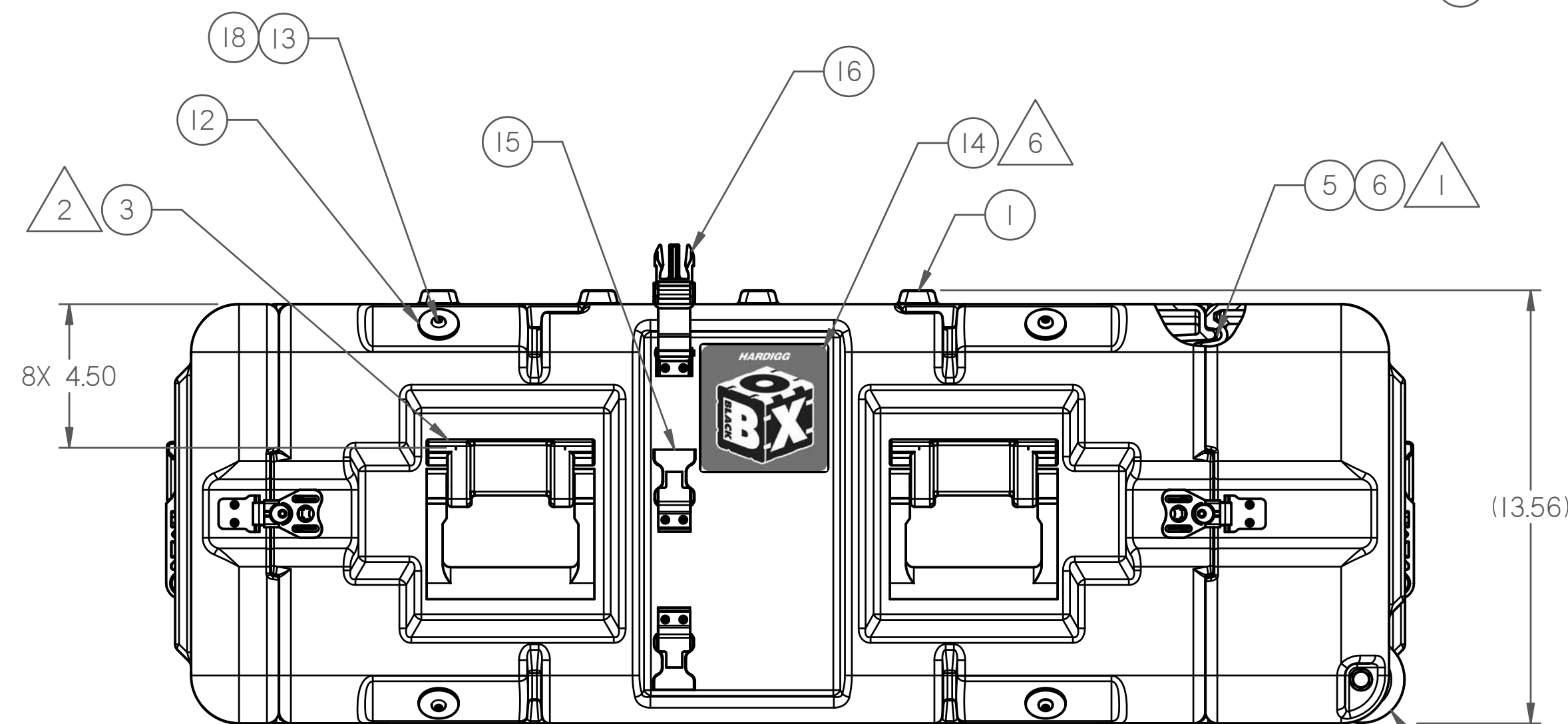


NOTES:

- 1 GASKET TO BE CLOSED LOOP
- 2 CENTER HANDLES IN HANDLEWELLS APPROXIMATELY AS SHOWN.
- 3 MOUNTING HOLE TO BE Ø1.06.
- 4 SHIM SHOCK MOUNTS FROM FRAME TO MOUNT WITH .38" THK SHIM.
- 5 THIS PART AND ALL OF ITS COMPONENTS MUST COMPLY WITH THE EUROPEAN PARLIAMENT DIRECTIVE 2002/95/EC ON THE RESTRICTED USE OF CERTAIN HAZARDOUS SUBSTANCES (ROHS). THE PARTS (INCLUDING PLATING), MUST NOT CONTAIN ANY OF THE FOLLOWING SUBSTANCES: LEAD, MERCURY, CADMIUM, HEXAVALENT CHROMIUM, POLY BROMINATED BIPHENYLS (PBB) OR POLYBROMINATED DIPHENYL ESTERS (PBDE).
- 6 CLEAN LABEL AREA WITH ISOPROPYL ALCOHOL & FLAME TREAT.



TOP VIEW



RIGHT SIDE VIEW

ITEM	DESCRIPTION	DWG NO. / PART NO.	QTY.	REVISION HISTORY					
				ZONE	REV	E.C.O.	DESCRIPTION	BY/DATE	APPROVED/DATE
1	CONTAINER ASSY , BLK-463	MFG-SR2111-2295W-463	1				A1- ITEM 11 QTY WAS 8. A2- DELETED ITEM 13. A3- ADDED NOTE 6. A4- PRV DIM WAS 5.00.	CHRIS HOPKINS 08MAR20	SPRAGUE 08MAR21
2	KIT, CATCH & STRIKE, LGE WING, W/SPRING, SSB	MFG-00005-03	16		A	039200			
3	KIT, HANDLE, INJ MOLDED, LARGE (INT MT)	MFG-00031	8		B	039265	ADDED ITEM 13 CHANGED QTY ITEM 11 WAS 16	D. SPRAGUE 08APR02	
4	KIT, (I) PRV & LABEL	MFG-00053-01	1						
5	RTV, CLR, ADHESIVE SEALANT	RTV, GE 108	A/R						
6	GASKET, SILICONE	P021-0473	134 "						
7	KIT, LID HANGER, SWIVEL, RIGHT HAND	MFG-00136-02	2						
8	KIT, LID HANGER, SWIVEL, LEFT HAND	MFG-00136-01	2						
9	SHOCK MOUNT	P67-73	8						
10	FRAME ASSY, 24", 4U	PI24-0010-24-04	1						
11	SCR, BTNHD,SOC, SSB	1/4-20 X .62"	8						
12	WSHR,FABCO,SSB	.264X1.25	8						
13	SCR, BTNHD,SOC, SSB	1/4-20 X .50"	8						
14	LABEL, MIDSECTION, BLACK BOX	PI24-0014	2						
15	KIT, RECEIVER, COUPLING CATCH	MFG-00140	4						
16	KIT, COUPLING CATCH	MFG-00141	2						
17	SR LID WHEEL ASSEMBLY	MFG-00143	2						
18	ADHESIVE, LOCTITE	242	A/R						

CUST:  
UNIT:  
CONTRACT NO.

HARDIGG IND  
BLACK BOX - 4U

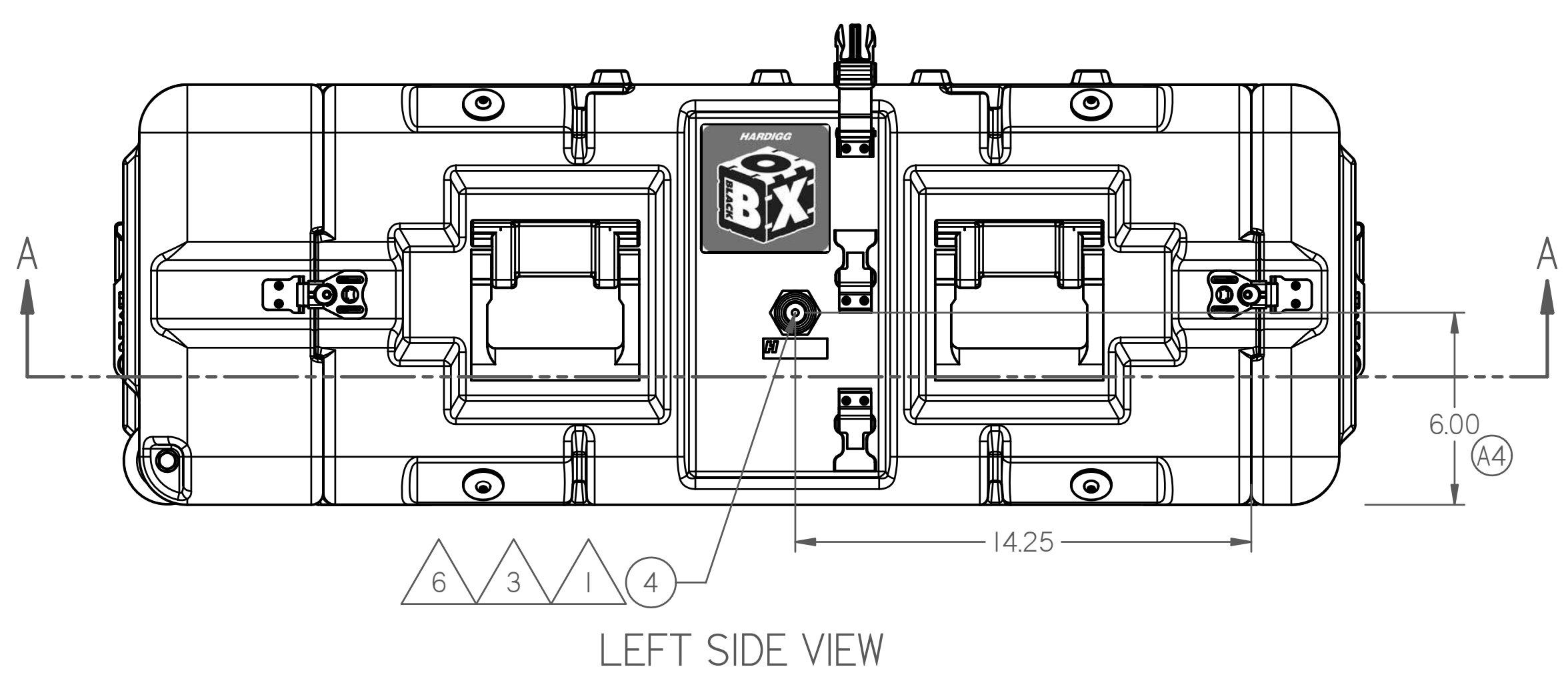
COMPUTER CONTROLLED DOCUMENT  
MANUAL CHANGES NOT ALLOWED

NEXT ASSY:	FINAL	SCALE	1/4	
TOLERANCE	UNLESS OTHERWISE SPECIFIED	± .XX ± .19	± .XXX ± .---	
DR.	D. SPRAGUE	DATE	07-11-07	
ENGR.	D. SPRAGUE	DATE	07-11-07	
CHKD.	CHRIS HOPKINS	DATE	08-02-08	
APVD.	CHRIS HOPKINS	DATE	08-02-08	
<p><b>HARDIGG</b>® <b>HARDIGG</b>® <b>INDUSTRIES, INC.</b> South Deerfield, Massachusetts 01373 USA</p>				
<p>TITLE <b>CNTNER ASSY, BLACK BOX, 4U</b></p>				
SIZE	D	CAGE CODE	11214	
DWG NO.	PI24-0100-04-02		REV	B
PROJ. NO.	PI24		SHEET	1 OF 2

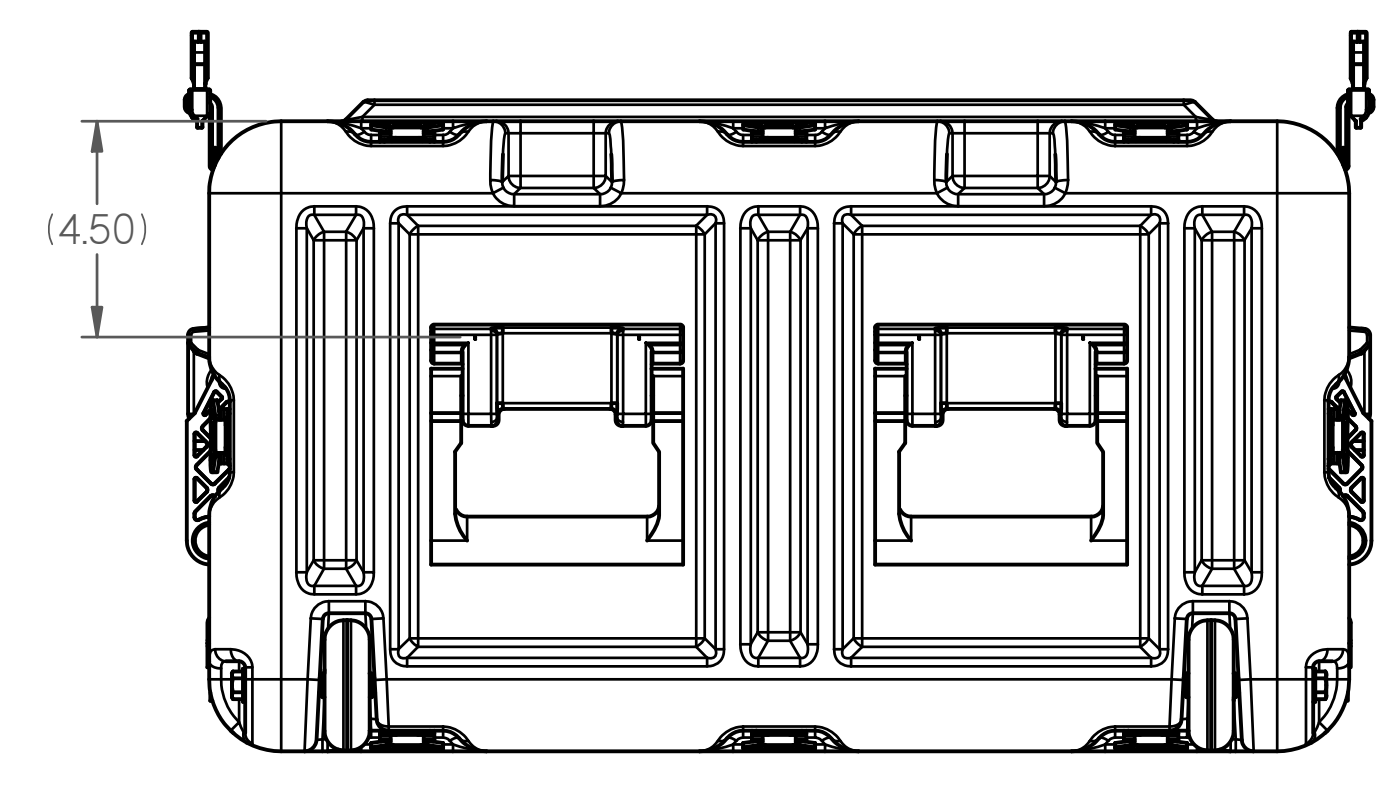
This drawing and all copies and the design and data shown are the property of HARDIGG INDUSTRIES, INC. So. Deerfield, MA USA and include proprietary information. The borrower by receipt or retention of the drawing agrees that, except as expressly authorized in writing by HARDIGG INDUSTRIES, INC. it will (1) not use the drawing or any copy of the design or data shown (2) not reproduce, copy, excerpt, exhibit or distribute the drawing or any copy for use by others and (3) upon demand return the drawing, all copies and all material copies therefrom.

8 7 6 5 4 3 2 1

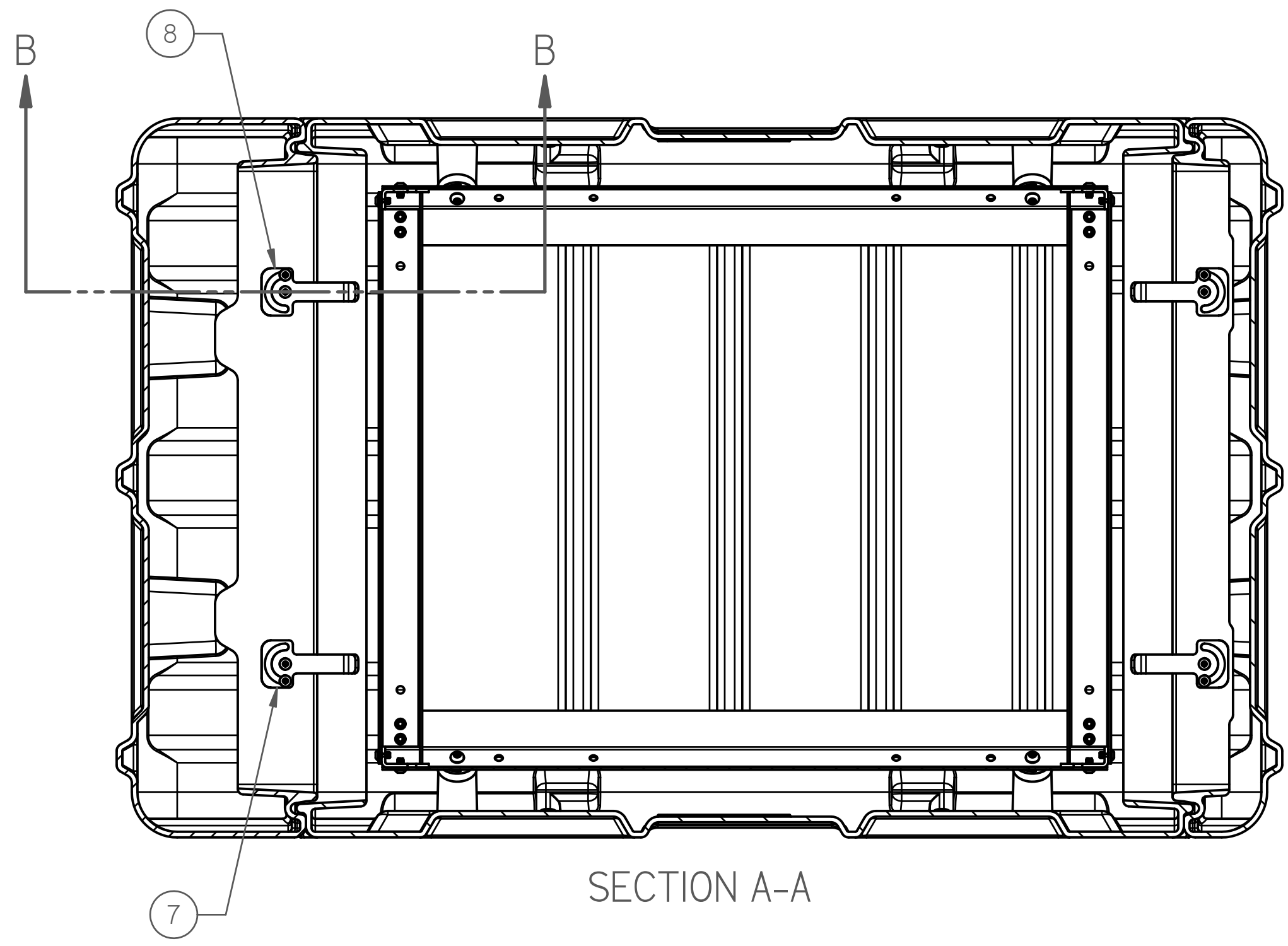
D  
C  
B  
A



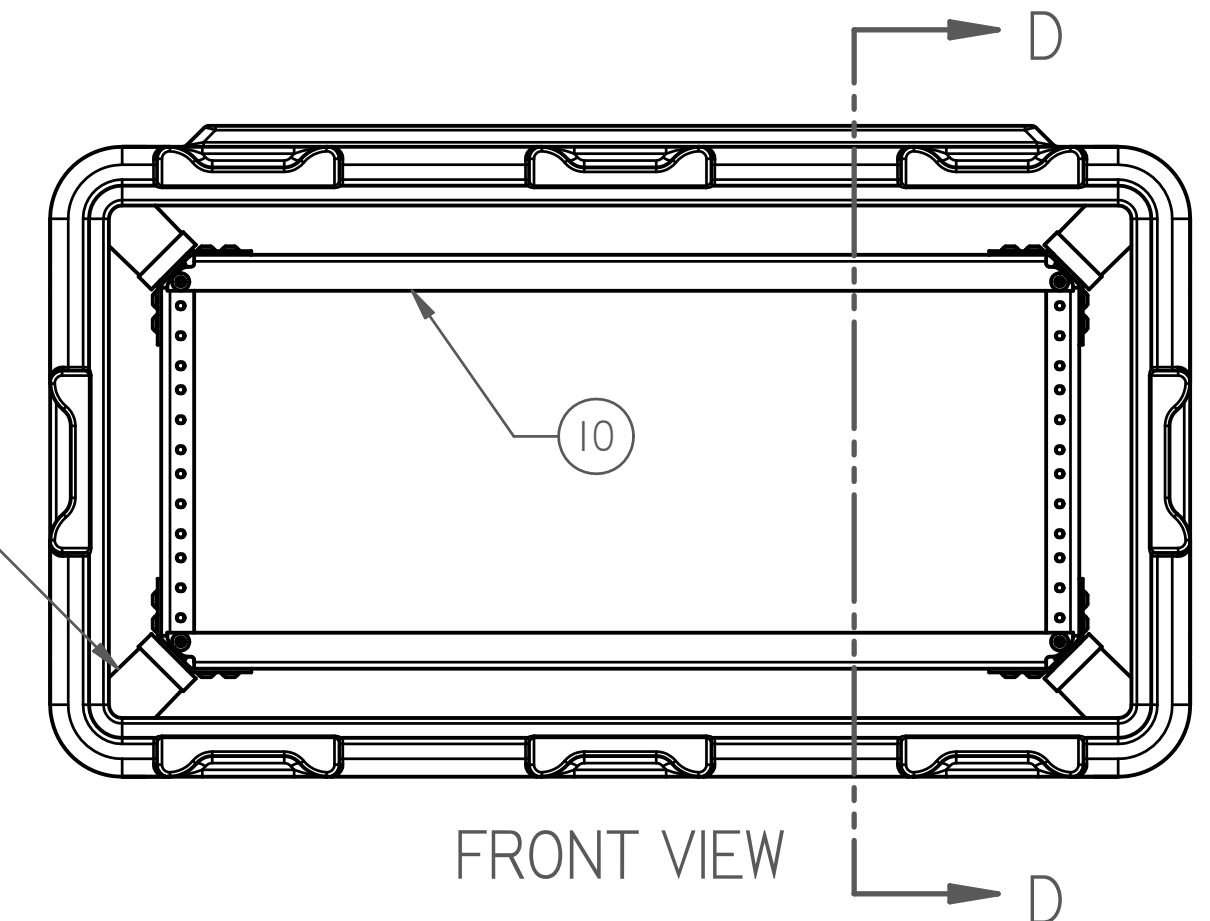
LEFT SIDE VIEW



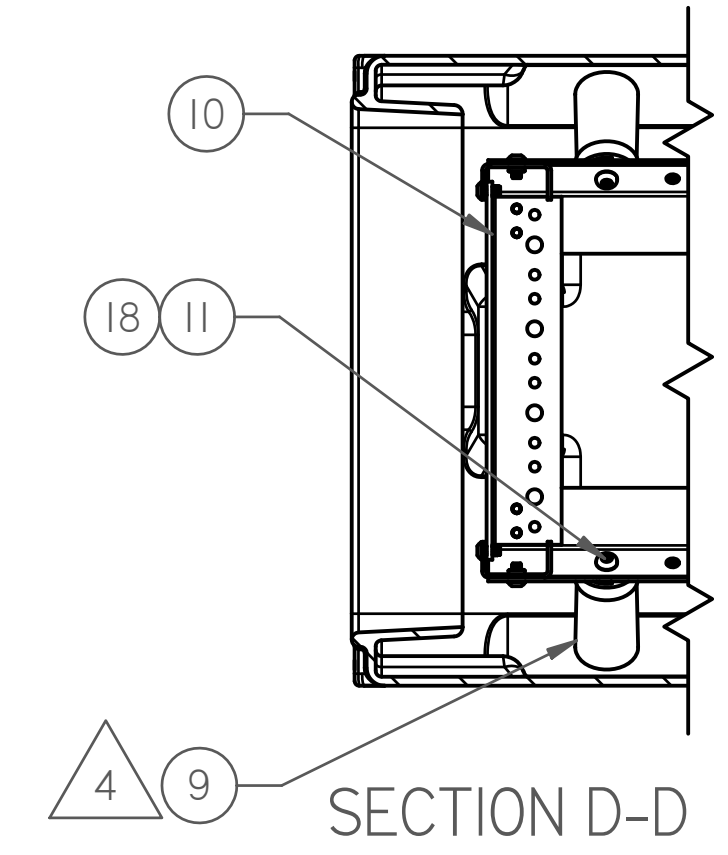
REAR VIEW



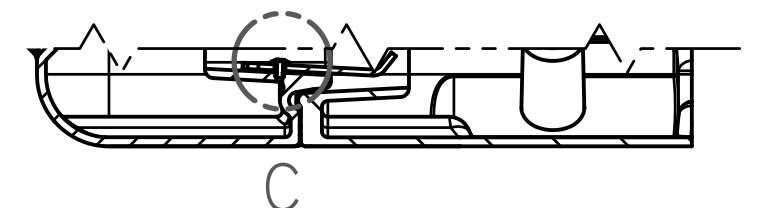
SECTION A-A



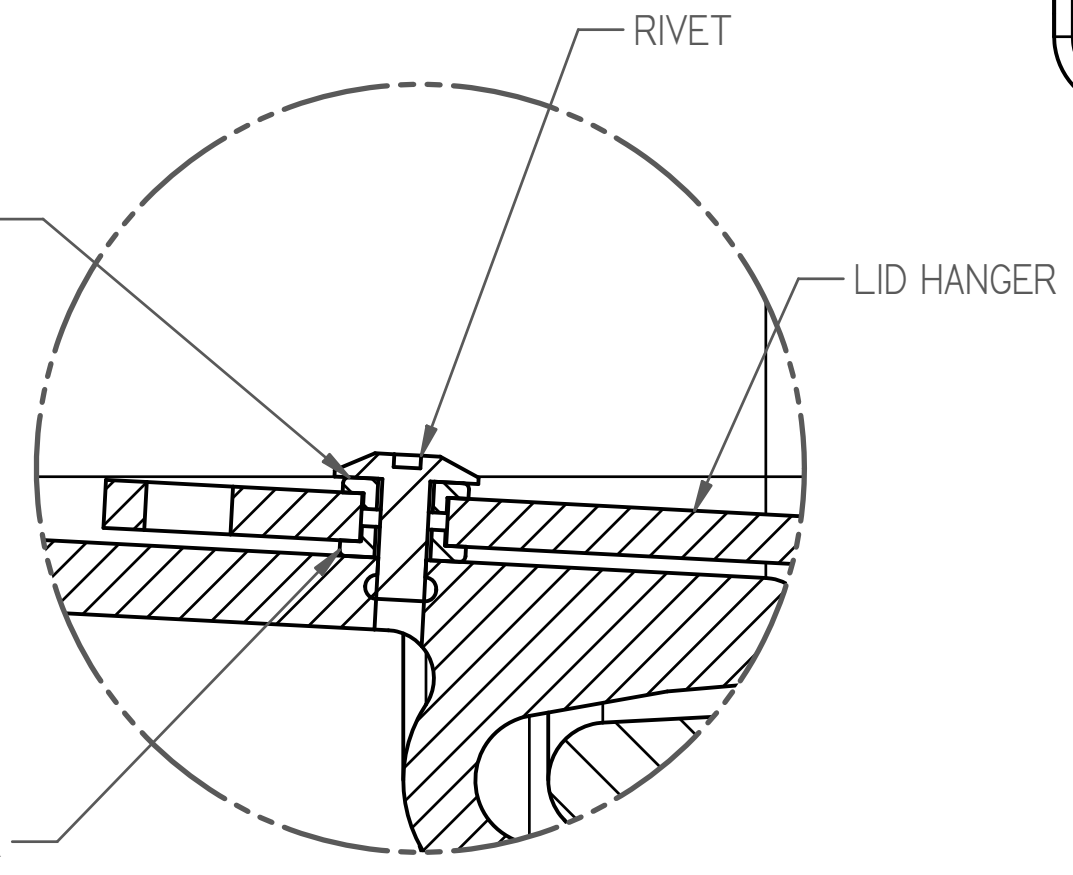
FRONT VIEW



SECTION D-D



SECTION B-B



DETAIL C  
2:1

DWG NO. PI24-0100-04-02  
SHEET 2 OF 2  
REV B

COMPUTER CONTROLLED DOCUMENT  
MANUAL CHANGES NOT ALLOWED

SIZE D	CAGE CODE 11214	DWG NO. PI24-0100-04-02	REV B
SCALE 1/4	SHEET 2 OF 2		

8 7 6 5 4 3 2 1