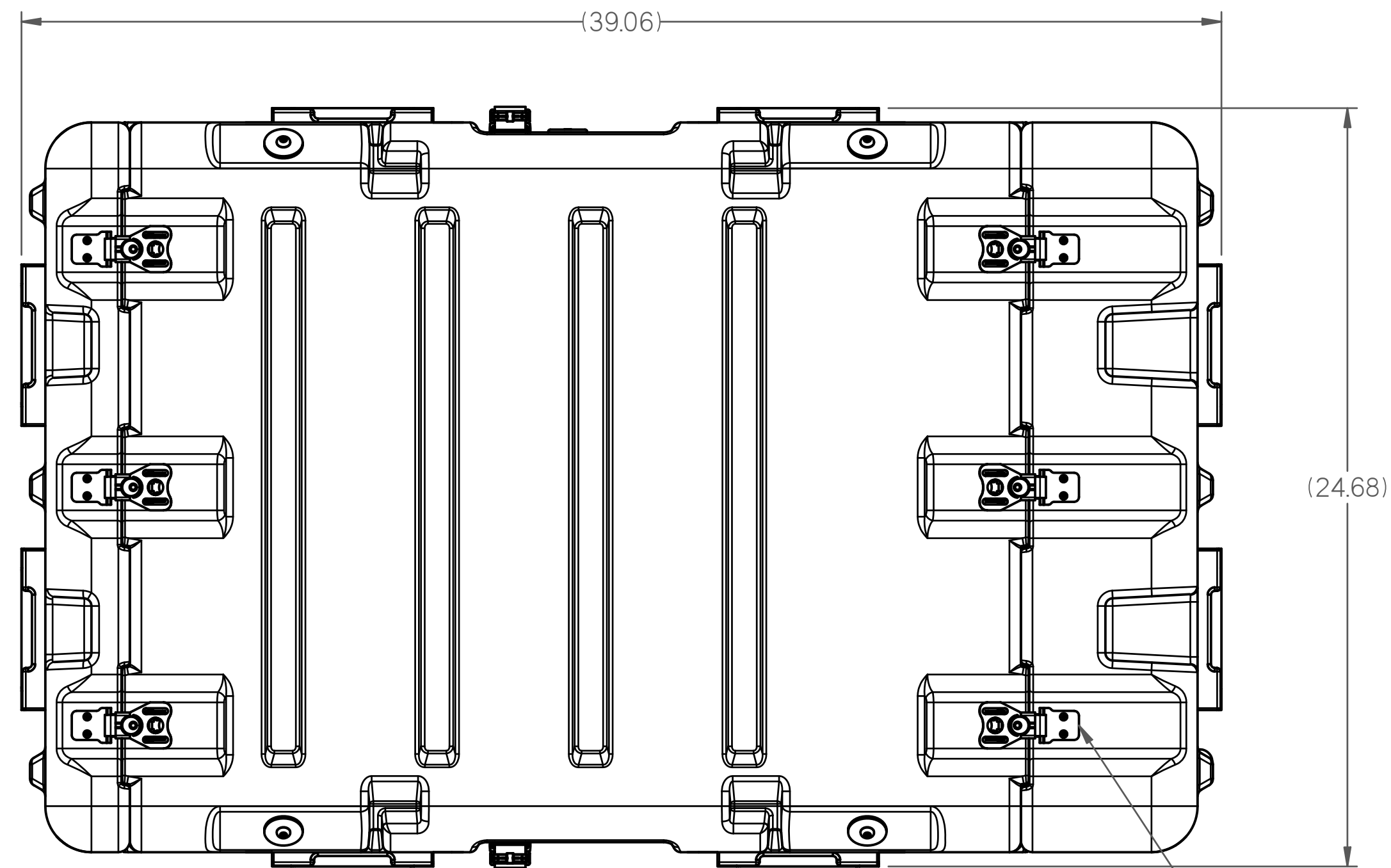


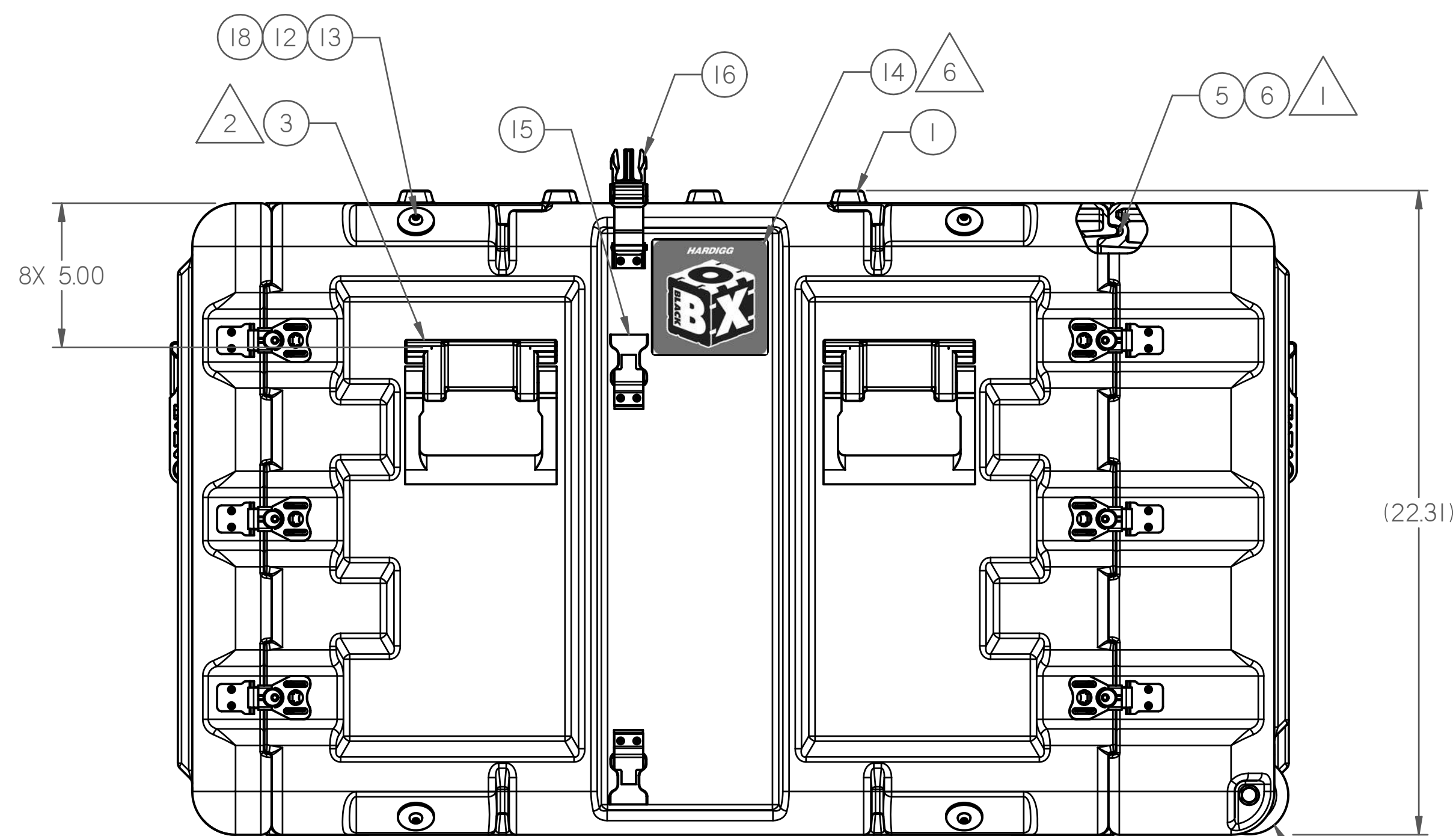
NOTES:

- 1 GASKET TO BE CLOSED LOOP
- 2 CENTER HANDLES IN HANDLEWELLS APPROXIMATELY AS SHOWN.
- 3 MOUNTING HOLE TO BE Ø1.06.
- 4 SHIM SHOCK MOUNTS FROM FRAME TO MOUNT WITH .38" THK SHIM.
- 5 THIS PART AND ALL OF ITS COMPONENTS MUST COMPLY WITH THE EUROPEAN PARLIAMENT DIRECTIVE 2002/95/EC ON THE RESTRICTED USE OF CERTAIN HAZARDOUS SUBSTANCES (ROHS). THE PARTS (INCLUDING PLATING), MUST NOT CONTAIN ANY OF THE FOLLOWING SUBSTANCES: LEAD, MERCURY, CADMIUM, HEXAVALENT CHROMIUM, POLY BROMINATED BIPHENYLS (PBBI) OR POLYBROMINATED DIPHENYL ESTERS (PBDE).
- 6 CLEAN LABEL AREA WITH ISOPROPYL ALCOHOL & FLAME TREAT.

ITEM	DESCRIPTION	DWG NO. / PART NO.	QTY.	REVISION HISTORY					
				ZONE	REV	E.C.O.	DESCRIPTION	BY/DATE	APPROVED/DATE
1	CONTAINER ASSY, BLK-463	MFG-SR2119-2295W-463	1				ITEMS 9 AND 11 QTY WERE 7	D. SPRAGUE 07OCT30	C. HOPKINS 07OCT30
2	KIT, CATCH & STRIKE, LGE WING, W/SPRING, SSB	MFG-00005-03	24		A	038527			
3	KIT, HANDLE, INJ MOLDED, LARGE (INT MT)	MFG-00031	8		B	039010	B1- ITEM 1 COLOR WAS BLK-032. B2- ITEM 2 QTY WAS 23. B3- ITEM 9 P/N WAS P67-17. B4- ITEM 11 WAS 1/4-20 X 3/8. B5- ITEM 13 WAS 1/4-20 ACORN NUT. B6- ADDED ITEM 18 & NOTE 5.	C. HOPKINS 08FEB06	DAVE SPRAGUE 08FEB06
4	KIT, (I) PRV & LABEL	MFG-00053-01	1						
5*	RTV, CLR, ADHESIVE SEALANT	RTV, GE 108	A/R		C	039205	C1- ITEM 11 QTY WAS 8. C2- DELETED ITEM 13. C3- ADDED NOTE 6. C4- PRV DIM WAS 5.00.	CHRIS HOPKINS 08MAR20	DAVE SPRAGUE 08MAR21
6*	GASKET, SILICONE	P021-0473	165 "		D	039271	ADDED ITEM 13 CHANGED ITEM 11 QTY WAS 16	D. SPRAGUE 08APR03	
7	KIT, LID HANGER, SWIVEL, RIGHT HAND	MFG-00136-02	2						
8	KIT, LID HANGER, SWIVEL, LEFT HAND	MFG-00136-01	2						
9	SHOCK MOUNT	P67-73	8						
10	FRAME ASSY, 24", 9U	PI24-0010-24-09	1						
11	SCR, BTNHD,SOC, SSB	1/4-20 X .62"	8						
12	WSHR,FABCO,SSB	.264X1.25	8						
13	SCR, BTNHD,SOC, SSB	1/4-20 X .50"	8						
14	LABEL, MIDSECTION, BLACK BOX	PI24-0014	2						
15	KIT, RECEIVER, COUPLING CATCH	MFG-00140	4						
16	KIT, COUPLING CATCH	MFG-00141	2						
17	SR LID WHEEL ASSEMBLY	MFG-00143	2						
18*	ADHESIVE, LOCTITE	242	A/R						



TOP VIEW



RIGHT SIDE VIEW

CUST:
UNIT:
CONTRACT NO.

HARDIGG IND
BLACK BOX - 9U

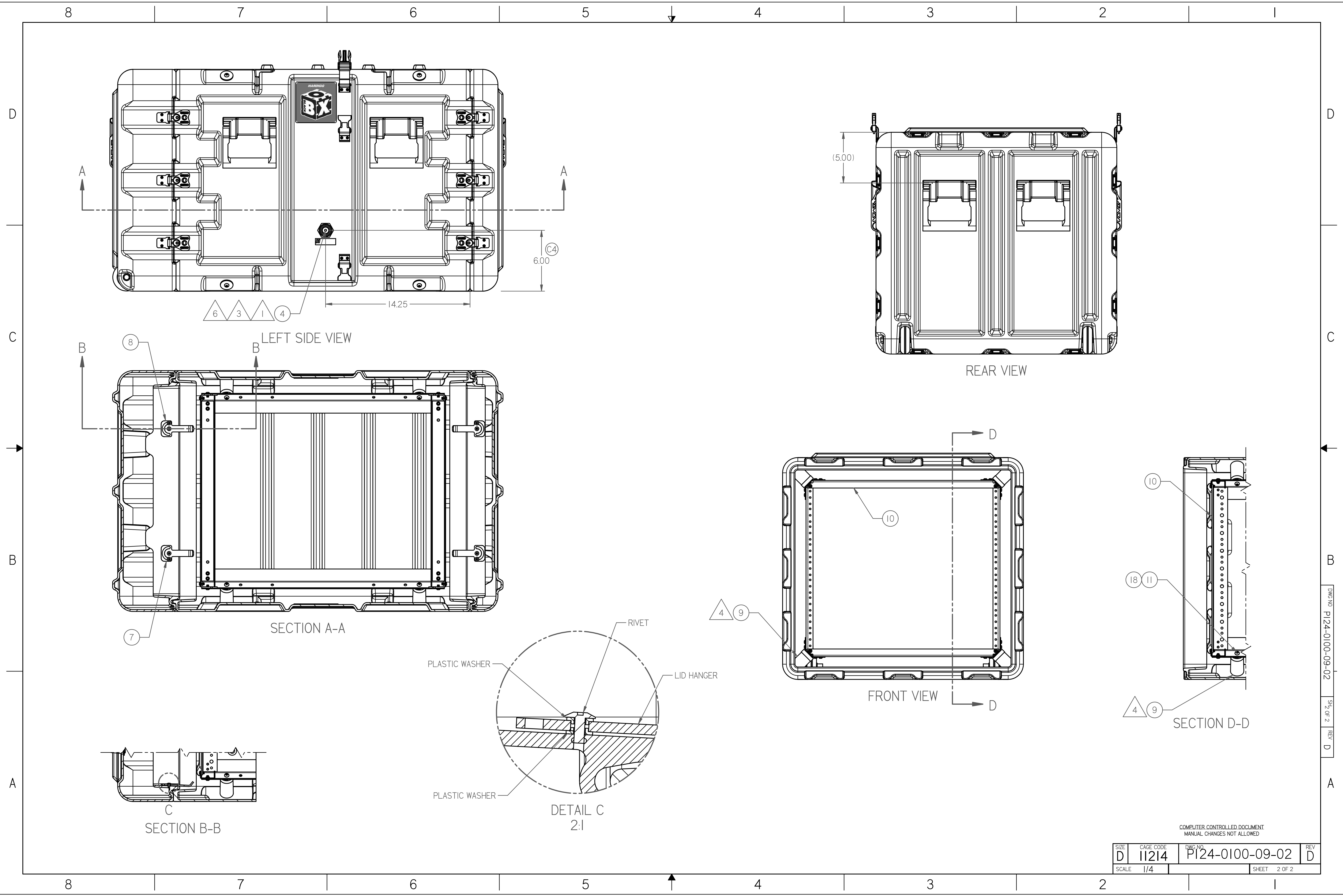
COMPUTER CONTROLLED DOCUMENT
MANUAL CHANGES NOT ALLOWED

NEXT ASSY:	FINAL	SCALE	1/4
TOLERANCE	UNLESS OTHERWISE SPECIFIED	± .XX	± .XXX
DR.	D. SPRAGUE	DATE	07-10-22
ENGR.	D. SPRAGUE	DATE	07-10-22
CHKD.	C. HOPKINS	DATE	08-01-09
APVD.	C. HOPKINS	DATE	08-01-09
TITLE			
CNTNR ASSY, BLACK BOX, 9U			
SIZE	CAGE CODE	DWG NO.	REV
D	11214	PI24-0100-09-02	D
PROJ. NO.	PI24	SHEET	1 OF 2

This drawing and all copies and the design and data shown are the property of HARDIGG INDUSTRIES, INC. So. Deerfield, MA USA and include proprietary information. The borrower by receipt or retention of the drawing agrees that, except as expressly authorized in writing by HARDIGG INDUSTRIES, INC. it will (i) not use the drawing or any copy of the design or data shown (ii) not reproduce, copy, excerpt, exhibit or distribute the drawing or any copy for use by others and (iii) upon demand return the drawing, all copies and all material copies therefrom.

HARDIGG® **HARDIGG**® INDUSTRIES, INC.
South Deerfield, Massachusetts
01373 USA

DWG NO. PI24-0100-09-02
SHEET 2
REV D



COMPUTER CONTROLLED DOCUMENT
MANUAL CHANGES NOT ALLOWED

SIZE D	CAGE CODE 11214	DWG NO. PI24-0100-09-02	REV D
SCALE 1/4	SHEET 2 OF 2		

DWG NO. PI24-0100-09-02
 SHEET 2 OF 2
 REV D